

# JUXTA F Series

## General Specifications

Model : FV1A/V

JUXTA

Manual Setter

### 1. GENERAL

This manual setter converts linear signals of 0~1V (0~100%) at the check terminal to optional linear current or voltage signals by varying set trimmer.

### 2. SPECIFICATIONS

IO Specifications	
Output signal	DC current or voltage signals
Load resistance	0~750Ω (FV1A) 2KΩ min (FV1V)
Output resistance	500kΩ min (FV1A), 1Ω max (FV1V)
Standard performance	
Relative error	±0.1% (signal output vs check output)
Insulation resistance	100MΩ min (at 500V DC) between output~check terminal~power supply
Voltage withstand	500V AC/minute between output~check terminal~power supply
Ambient temperature and humidity	Normal operating condition: 0~50°C, 5~90% RH Operating limit: -10~60°C, 5~95% RH Storage condition: -40~70°C, 5~95% RH (no condensation)
Power supply voltage	24V DC ±10%
Effect of power supply voltage fluctuation	±0.1% max of span per 24V DC ±10% fluctuation
Effect of load resistance	±0.05% of span per 0~750Ω fluctuation (FV1A) ±0.05% of span per 2KΩ~∞ fluctuation (FV1V)
Effect of change in ambient temperature	±0.2% max of span per 10°C change in temperature
Effect of change in ambient humidity	±0.2% max of span per 5~90% RH change in humidity
Current dissipation	24V DC 80mA (FV1A), 45mA (FV1V)
Mountings and dimensions	
Material	Case: ABS plastic
Boards	Both sides glass-epoxy
Mounting methods	Rack, wall, or DIN rail
Connection method	M4-screw terminals
External dimensions	72 x 24 x 127 mm (h x w x d)
Weight	130g
Accessories	
Tag number label : x1	
Mounting blocks: x2	M4 mounting screws: x2

FV1□-1□ \* B

TYPE NO.

OUTPUT SPECIFICATION

A: Current

V: Voltage

OUTPUT SIGNAL

FV1A

FV1V

A: 4~20mA DC

1: 0~10mV DC

B: 2~10mA DC

2: 0~100mV DC

C: 1~5mA DC

3: 0~1V DC

D: 0~20mA DC

4: 0~10V DC

E: 0~16mA DC

5: 0~5V DC

F: 0~10mA DC

6: 1~5V DC

G: 0~1mA DC

7: -10~+10V DC

Z: (custom) current signal  
(24mA max)

0: (custom) voltage signal  
(±10V max)

**POWER SUPPLY**

24V DC±10%

**OUTPUT RESISTANCE AND PERMISSIBLE LOAD RESISTANCE**

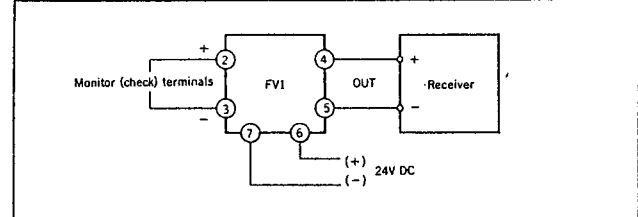
FV1A (DC Current Output)		
Output Signal	Output Resistance	Permissible Load Resistance
4~20mA DC	5MΩ min	0~750Ω
2~10mA DC		0~1500Ω
1~5mA DC		0~3000Ω
0~20mA DC		0~750Ω
0~16mA DC		0~900Ω
0~10mA DC		0~1500Ω
0~1mA DC		0~15kΩ
Others where I <sub>100</sub> =24mA max		

I<sub>100</sub> : 100% output current

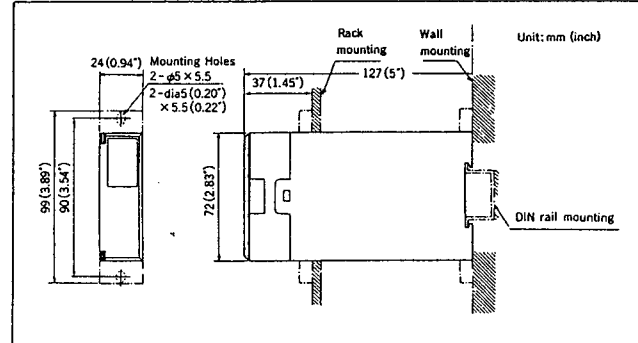
FV1V (DC Voltage Output)		
Output Signal	Output Resistance	Permissible Load Resistance
0~10mV DC	100Ω max	250kΩ min
0~100mV DC		2kΩ min
0~1V DC	1Ω max	10kΩ min
0~10V DC		2kΩ min
0~5V DC		2kΩ min
1~5V DC		10kΩ min
-10~+10V DC		10kΩ min
Others where V <sub>100</sub> ≤ 100mV	100Ω max	250kΩ min
V <sub>100</sub> = 24mA max	1Ω max	10kΩ min

V<sub>100</sub> : 100% output voltage

**WIRING DIAGRAM**



**EXTERNAL DIMENSION**



Subject to change without notice for grade up quality and performance